



# **NORTHWEST OHIO JUVENILE DETENTION, TRAINING & REHABILITATION CENTER**

## **ANNUAL REPORT**



**January 1, 2008 – December 31, 2008**

**Brian Patrick, CCE  
Superintendent**

## TABLE OF CONTENTS

<i>Detention Center Staff and Board Members</i>	3
<i>Organizational Chart</i>	4
<i>Background, Mission Statement</i>	5
<i>Program Philosophy</i>	5
<i>Statutory Authority</i>	6
<i>Special Incidents</i>	6
<i>Juvenile Detainee Discipline &amp; Grievances</i>	6
<i>Facility Accreditation</i>	6
<i>Programs &amp; Services</i>	7-10
<i>Population &amp; Offense Statistics</i>	10-13
<i>Operating Budget</i>	14
<i>Operating Revenues/Expenditures</i>	15
<i>Capital Revenues/Expenditures</i>	16

## Employees & Staff

### Shift Supervisors

G. John Proxmire, Lieutenant  
Lisa Fontaine, Lieutenant  
James Metcalf, Lieutenant  
Lucas Ankney, Lieutenant

### Juvenile Corrections Officers

Shawn Helf, Intake Sergeant  
Matthew Williams, Officer  
Darcy Brown, Officer  
Tracy Valentine, Officer  
Ashley Rohrs, Officer  
John Hogan, Officer  
Victor Morrow, Officer  
Brian Bowsheer, Officer  
Joseph Mosier, Officer  
Augustina Carrizales-Gibson, Officer  
Carrie Dobaczewski, Officer  
Chad Kauffman, Officer  
Randall Gibson, Officer

### Support Staff

Christine McVay, MSSA, LISW  
-Four County Family Center  
Tim Bidlack, BS, CDCA  
-Recovery Services of NW Ohio

### Administration

Brian Patrick, Superintendent  
April Cook, Asst. Superintendent  
Gayle Hilkert, Fiscal Officer

### Building & Grounds Maintenance

Dave McBride

### Teachers

Alisa Bowsheer  
Shawn Moore

## Board of Trustees

### Defiance County

Commissioner Tom Kime  
Diane Collins  
Roger Gardner, *Chairman*  
Judge Stephen Ruyle

### Fulton County

Commissioner Dean Genter  
Roy Miller  
Brad Grime  
James Dominique  
Judge Michael Bumb

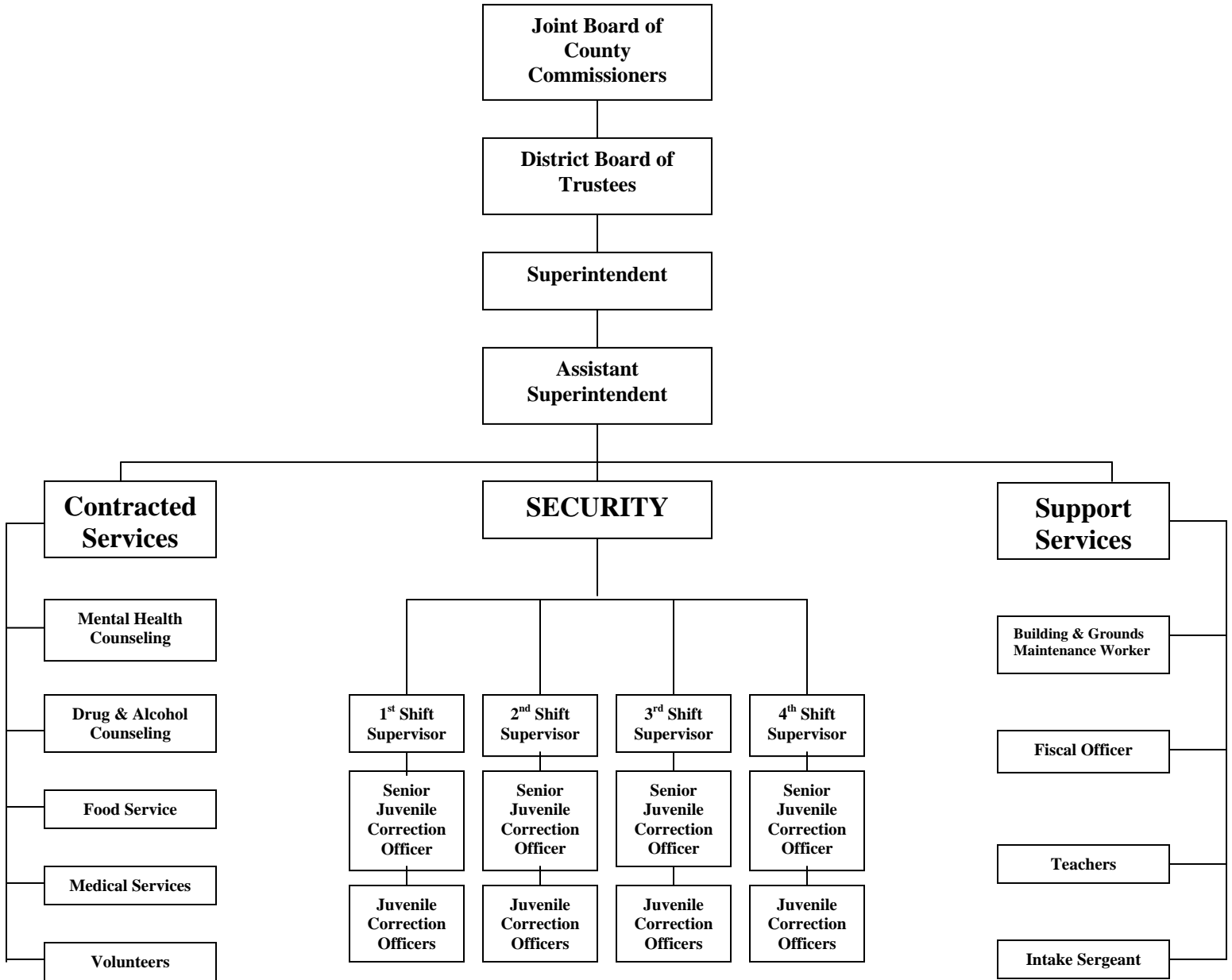
### Henry County

Commissioner Rich Myers  
Larry Siclair  
Tom Mack, *Vice Chairman*  
Judge Denise Herman McColley

### Williams County

Commissioner Brian Davis  
Scott Acus, MA, MSW, LISW  
Edward Ewers  
Judge Steven Bird

## ORGANIZATIONAL CHART



## ***BACKGROUND***

The Northwest Ohio Juvenile Detention, Training & Rehabilitation Center, which is located in eastern Williams County Ohio, became operational in February of 2000 as a regional Juvenile Detention Center to provide secure detention to juveniles within the jurisdictions of Defiance, Henry, Fulton and Williams counties. The Center consists of approximately 17,000 square feet and has thirty-two individual detention cells, a control room, multi-purpose room, two classrooms, intake area, nurse clinic, gymnasium, library and administrative offices. A secured outdoor recreation area with approximately 6,900 square feet is also available.

## ***MISSION STATEMENT***

The mission of the Northwest Ohio Juvenile Detention, Training & Rehabilitation Center is to provide leadership for change for youth, family units, and communities. It operates by creating legitimate, alternative pathways to adulthood through equal access to services that are least intrusive, culturally sensitive, and consistent with the highest professional standards. The youth, while being detained at the Center, will be controlled, supported, and protected with these standards in mind.

## ***PROGRAM PHILOSOPHY***

The Northwest Ohio Juvenile Detention, Training & Rehabilitation Center provides both pre-trial and short-term commitments for incarceration. Care must be provided in a non-judgmental manner equal to all, regardless of Court status (i.e. accused, adjudicated, misdemeanor, or felony). It is our belief that structure and expectations are not viewed in a punitive nature, provided that structure and expectations are made clear and precise and are enforced in a manner that is both fair but firm and equal to all. Due to the short terms of confinement, and the necessary emphasis on safety and security, we recognize our limitations and inability to provide long term affects on those juveniles we detain. We further recognize that solutions to many of the problems faced by our detainees will be best addressed by the childcare professionals within the many support services available to the court (i.e. Probation, Drug/Alcohol Abuse Counselors, Children's Services, etc.). We therefore, view our role as: (1) a time delay, so that the Court might address the allegations against the child and identify the youth's individualized needs; and (2) as a motivational tool for those who will attempt to address the variables responsible for creating conflict in the youth's life.

## ***CONFINEMENT OF JUVENILES***

Juvenile detainees shall not be confined in the Northwest Ohio Juvenile Detention Training & Rehabilitation Center unless secure placement is essential. Any confinement of a juvenile in the Center is in accordance with Rule 7 of the Ohio Rules of Juvenile Procedure which state:

A child taken into custody shall not be placed in detention or shelter care prior to final disposition unless any of the following apply:

- (1) Detention or shelter care is required: (a) to protect the child from immediate or threatened physical or emotional harm; or (b) to protect the person or property of others from immediate or threatened physical or emotional harm.
- (2) The child may abscond or be removed from the jurisdiction of the court;
- (3) The child has no parent, guardian, custodian or other person able to provide

- supervision and care for the child and return the child to the court when required;
- (4) An order for placement of the child in detention or shelter care has been made by the court;
  - (5) Confinement is authorized by statute.

### ***STATUTORY AUTHORITY***

The Detention Center and its Board of Trustees operate under the authority granted in §2152.44 and §2151.65 of the Ohio Revised Code. The facility is governed by a seventeen member Board of Trustees where each member, except the Judges, has a vote towards proposed legislation. The Center and its programs are managed by a single administrative officer, called the Superintendent, whose authority is granted in §2152.42 of the Ohio Revised Code. All employees and units of management are responsible to the Superintendent.

### ***SPECIAL INCIDENTS***

A special incident is defined as a situation which deviates from standard operating procedures, such as a response to aggression, an escort to the observation cell for “cooling off” due to aggressive/disorderly behavior, or removal of the juvenile from his/her assigned cell due to self-harm or for a safety/security threat. There were 59 special incidents during 2008. It should be noted that there were no injuries to either staff or juvenile detainees resulting from a special incident.

### ***JUVENILE DETAINEE DISCIPLINE***

The Detention Center adheres to American Corrections Association standards on juvenile detainee discipline. Rule violations at the facility are separated into three categories which range in severity: Minor Rule Violations, Serious Rule Violations, and Major Rule Violations. A Major Rule Violations can also result from a repeat offense of a Serious Rule Violation. In 2008, there were 44 Major Rule Violation Reports written.

### ***JUVENILE DETAINEE GRIEVANCES***

The Center received 60 juvenile detainee grievances during 2008. Of those, 47 grievances were denied, 9 grievances were approved, and 4 grievances were returned without action.

### ***FACILITY ACCREDITATION***

The Center adheres to correctional operation and program standards outlined in the Ohio Administrative Code and the American Corrections Association standards for Juvenile Detention Facilities. The Center was approved by the Board of Trustees in the summer of 2008 to begin preparations for accreditation by the Commission on Accreditation for Corrections through the American Correctional Association and expects to have an accreditation audit in the fall of 2009. The Center also maintains facility accreditation by the Ohio Department of Youth Services. During its yearly audit held in June 2008, the Center was in compliance with 100% of the mandatory standards and 100% of the recommended standards for Juvenile Detention Facilities as set forth in Ohio Administrative Code 5139-37.

## ***PROGRAMS AND SERVICES***

To make use of valuable community resources, the Center hosts various non-profit and public service agencies in speaking to and facilitating group sessions with the juvenile detainees at the Center. Current community agencies providing voluntary services to the Center are: The RIDGE Project, Women and Family Services, Recovery Services of Northwest Ohio, Four County Family Center, Bill Glass Champions for Life, Sports World, The Joe Foss Institute, and several religious services volunteers.

### **Mental Health Counseling Services**

The center offers an on-site mental health counselor program provided by the Four County Family Center, a non-profit agency accredited by the Ohio Department of Mental Health. The Mental Health Counselor, Christine McVay, MSSA, LISW, is a Licensed Independent Social Worker who performs a full range of youth counseling services, as well as court ordered mental health diagnostic assessments. Psychosocial assessments, with mental health diagnoses and treatment recommendations, are provided to those youth identified by the courts are requiring this service and can include the development of a comprehensive Individual Service Plan for each youth. Christine employs weekly individual therapy sessions using cognitive and reality therapy models, as well as role play activity to address ISP goals. Group Therapy Sessions are incorporated into the mental health program and focus on peer participation in two different types of groups. One group participates in cognitive behavioral issues, designed to address criminal thinking errors, anger management, etc., and the other participates in a relaxation group. Finally, family sessions, which are designed to focus on the need for youthful offender family support mechanisms, may be utilized during a youth's stay at the center. During 2008, the mental health counselor completed 110 hours of youth assessments, 184 hours of group sessions, 70 hours of family sessions, and began developing individualized behavioral plans to assist in the reduction of acting out behaviors and to assist in the stabilization of unacceptable behavior.

### **Drug and Alcohol Counseling Services**

Recovery Services of Northwest Ohio also provides a prevention specialist to conduct programming twice monthly to youth detained at the center. Topics covered include the addiction process, conflict resolution, and how our thoughts control our behavior.

In addition to general prevention classes, the Detention Center provides a 90-day treatment program for juvenile detainees who are experiencing alcohol or other drug related problems entitled "Life without Drugs." This program is provided by Recovery Services of Northwest Ohio, Inc., a non-profit agency accredited by the Commission on Accreditation of Rehabilitation Facilities, Ohio Department of Mental Health, and the Ohio Department of Alcohol and Drug Addiction Services. The on-site Substance Abuse Counselor is Tim Bidlack, BS, CDCA. The Life without Drugs program educates its youth on the disease concept, 12 step support groups, as well as relapse prevention, family origin issues, anger management, coping/decision making skills, and leisure/recreational activities. Major programmatic activities include in-depth assessment, substance abuse education, group therapy, and individual counseling. During 2008, the Life without Drugs counselor completed 90 hours of youth assessments, 251 hours of individual sessions, 298 hours of group sessions, and 529 case management hours.

### Women and Family Services, Inc.

Women & Family Services, Inc. offers a variety of classes for the detained youth focusing on teaching healthy relationships and violence prevention. Topics include: dating violence, sexual assault, personal safety, stress & violence, gender issues, internet safety, teen-adult relationships, sexual harassment, and the role self-esteem plays in violence prevention. The goals of these classes are to teach youth how to recognize healthy versus unhealthy relationships so they may be able to make better choices throughout their lives. Classes are conducted twice monthly and include activities to actively engage students in the learning process.

### The RIDGE Project

RIDGE: Reality Instruction, Developing Generations of Excellence. The RIDGE Project targets youth ages 13-19, as well as their families, caregivers, social service providers, schools, and the juvenile justice system. It exists to work with youth to provide education in the areas of: abstinence, alcohol, tobacco and other drug prevention, and violence, with the goal of producing a generation of young adults who model responsible behavior personally, socially, and culturally. RIDGE Project volunteers conduct classes weekly during school months for all youth detained at the center.

### Life Skills

The center utilizes a program which contains various lessons covering core life skills. The main content areas come from the PACE Learning Systems life skills curriculum with added activities and materials added to enhance the program. The lessons can be used individually or as a comprehensive teaching tool to create and enhance skills and behaviors to help youth lead successful, productive lives. Life Skills instruction combined with Workforce Development (also from PACE Learning Systems) strengthens and enhances students' employability skills. The topics discussed during Life Skills class are: Self Concept, Self Esteem/Confidence, Emotions, Conflict, Stress, Priorities, Goals, Decision Making, Solving Problems, Decision Making, Planning and Managing Time, Dealing with Criticism, Clear Thinking, Identifying Interests, Educational Opportunities, Dealing with Failure, Effective Listening, Assertiveness, Relating to People, Thinking System, Giving Directions and Following Directions.

### Sports World, Inc.

Sports World, Inc. sends former professional athletes to share personal life experiences with youth. Because of their athletic backgrounds, these players were able to capture the attention and hearts of youth nationwide. In turn, this helps the youth to recognize the consequences of their choices while challenging them with the message of hope and the fact that they must always remember: *"You're Not Born a Winner; You're Not Born a Loser – You're Born a Chooser!"*

### Joe Foss Institute

The Joe Foss Institute is an organization inspired and founded by United States Marine Corps Medal of Honor Recipient, General Joe Foss and his wife, Didi Foss. It is dedicated to promoting patriotism, public service, integrity and the appreciation of America's freedoms. It is the Institute's vision to encourage an informed patriotism and to be nationally recognized as the premier organization promoting patriotism through personal contact in schools and with youth groups.

### Bill Glass Champions for Life

Bill Glass Champions for Life recognizes that all too often America's children are grouped among America's least. Heeding the ministry's call to bring the gospel to "the least," Champions For Life facilitates youth programs that create long-term positive changes in America's youth. By using the format of the school assembly, Champions for Today uses former professional athletes' motivational speaking platforms to urge students toward making positive lifestyle choices. These choices reflect a desire to pursue academic and moral excellence and to refrain from dependence on drugs, alcohol and a promiscuous social life.

### Girls Circle

The Girls Circle is a model of structured support groups for girls 9-18 years of age. It utilizes a strengths-based, skill building approach to create a safe space for girls to address risky behaviors, build on protective factors, and improve relationships in a format that interests and engages girls. It is designed to foster self-esteem, help girls maintain authentic connection with peers and adult women in their community, counter trends towards self-doubt, and allow for genuine self expression through verbal sharing and creative activity. Groups are facilitated through a trained staff member. During the Girls Circle group, the female youth express themselves through creative or focused activities and oftentimes, themes are introduced which relate to the girls' lives--such as being a girl, trusting ourselves, friendships, body image, goals, competition, and decision making. The Girls Circle does not aim to provide advice, but encourages girls to share experiences that are helpful to one another. The following courses are integrated into the Girls Circle program:

#### *Expressing My Individuality*

8-week program. Explores topics such as celebrating individuality, diversity, getting along with others, and addresses goals, conflict styles, feeling good about ourselves, and taking time to relax. Activities include values exploration, "How Others See Me," potting a plant to symbolize personal growth, and finally culminates with a girls' compliment circle.

#### *Relationships with Peers*

10-week program. Enhances girls' awareness of their relationships with themselves and others. Themes include "Expressing Myself," "Accepting Different Parts of Myself," "Giving Voice to Feelings," Romantic Relationships," "Girl fights or Girlfriends" and are complimented by activities such as journaling, role-play, and more.

#### *Who I Am*

8-week program. Works with girls to examine identity, assertiveness skills, and goal setting through role-play, relationship to music and more. Themes include "Journaling and Self-Disclosure," "Personal Growth/Assertiveness," and "Life Goals/Personal Goals."

#### *Paths to the Future*

12-week program. A skills-building support circle for use with at-risk or court-involved girls. Examines thoughts, beliefs, and actions about friendships, trust, authority figures, mother/daughter relationships, sexuality, dating violence, HIV, drug abuse, stress and goal-setting. Opens up girls to important exploration regarding their choices and behaviors and examines ways to promote self-care and healthy decision-making through lively, prepared discussions and activities. Creative activities include assertiveness role-plays, collage, progressive relaxation, writing, creating "Life Maps" and more.

### Education

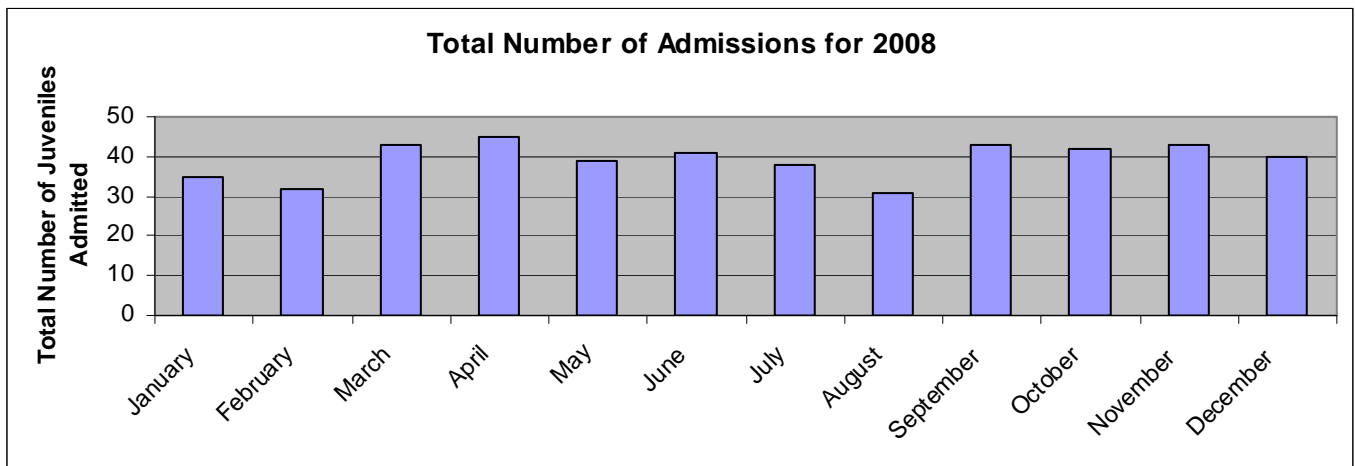
The education program at the Center is a highly structured curriculum that is provided by two Ohio Department of Education certified teachers. Upon admission, the Center tests all juveniles in mathematics, science, and the language arts for placement into the Center's computer based education curriculum. The Accelerated Reader program is utilized at the Center to ensure that the juveniles maintain an acceptable and appropriate reading comprehension level. A General Educational Development (GED) program has also been incorporated which allows the juvenile to complete his/her GED preparatory work while at the Detention Center. The juvenile can then receive a fee-waiver to take the GED test at an approved site either while at the Center, or after his/her release from detention. During 2008, 7 juveniles completed the GED curriculum and pre-test and went on to pass the state test while at the center. It should be noted that the success rate for the center's youth on the state GED test was 100% in 2008.

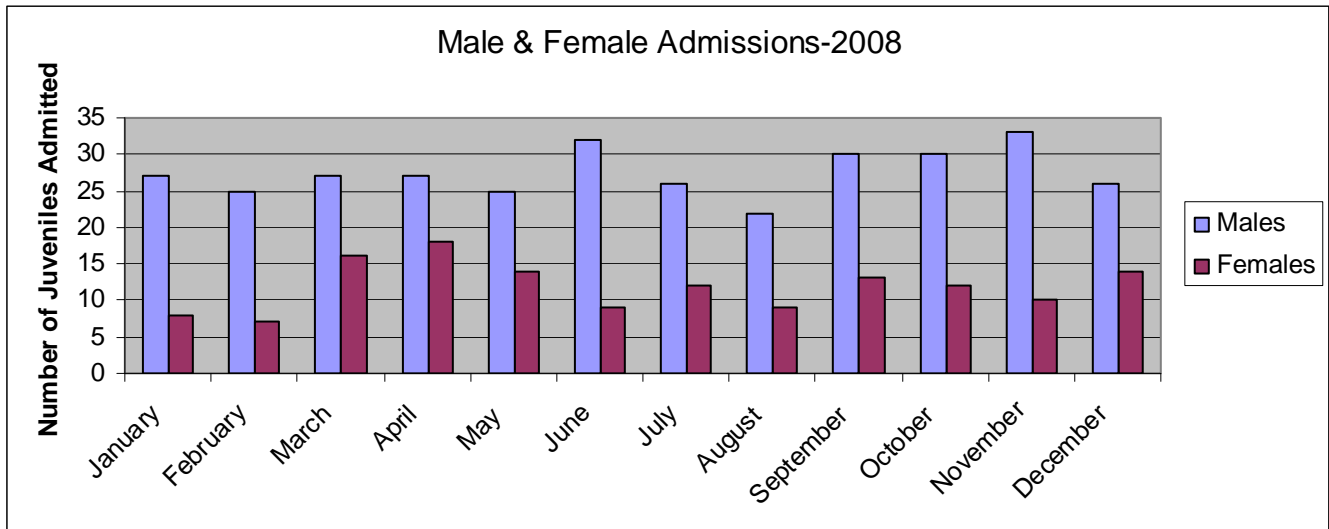
### Physical Education

The Center also provides a structured physical education program in accordance with 5139-37-18(B)(6) of the Ohio Administrative Code. This requirement includes, at a minimum, 1 hour of organized group large-muscle activity. Leisure and recreational activities are also part of the program requirements at the Center allowing juveniles 1 hour of additional recreational and leisure activities daily.

## ***POPULATION STATISTICS***

In 2008, the Center received 472 juvenile admissions: 330 males and 142 females. 244 juveniles were recidivists resulting in an overall recidivism rate of 51.7%. This is a 0.4% increase from the 2007 recidivism rate. The number of juveniles admitted to the Detention Center ranged from a low of 31 in August to a high of 45 in April.





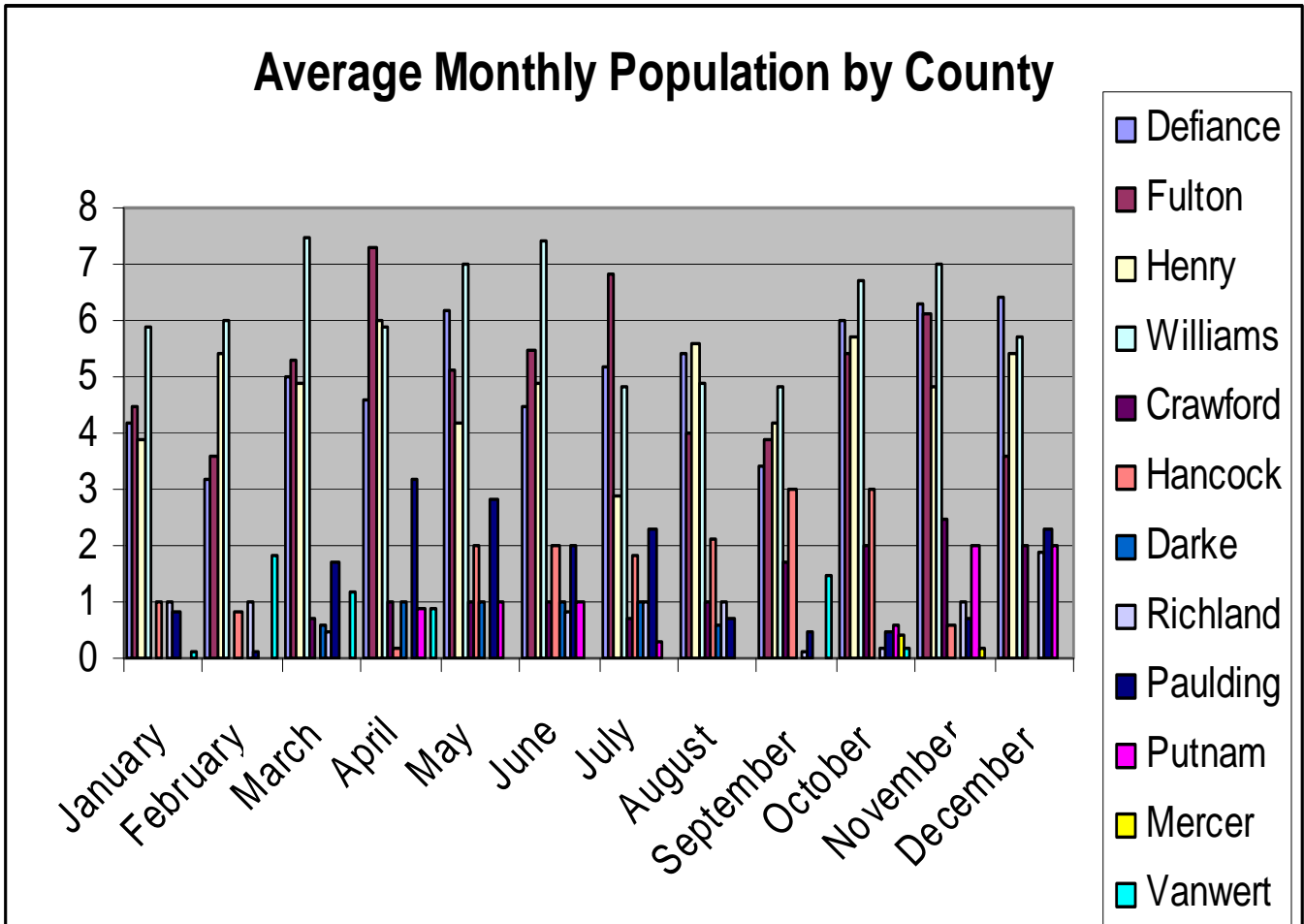
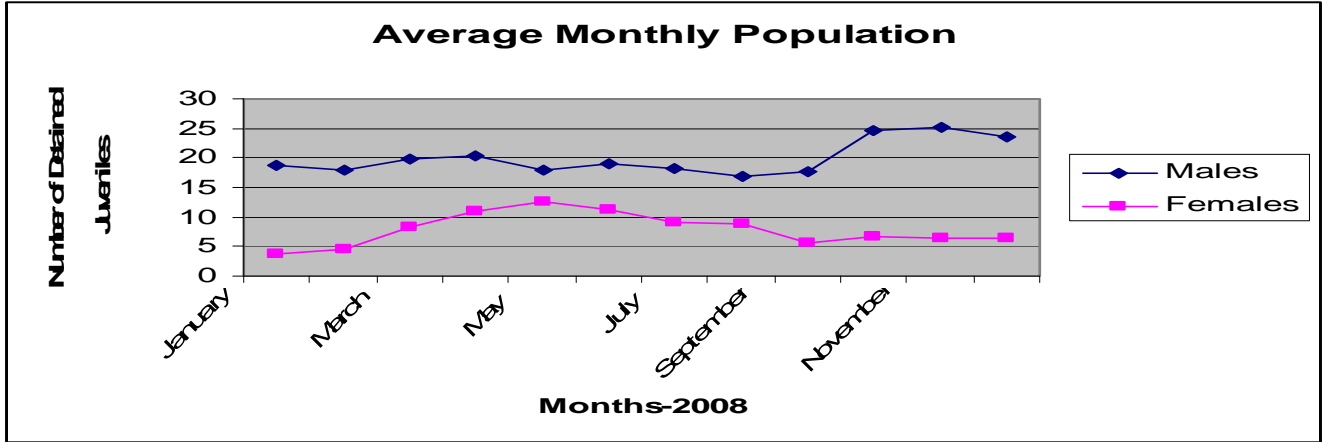
During 2008, there were 23 juvenile detainees who were transferred into the custody of the Ohio Department of Youth Services and 18 juvenile detainees who were transferred into the custody of the Juvenile Residential Center of Northwest Ohio.

	<b>Total Intakes</b>	<b>Males</b>	<b>Females</b>	<b>Recidivists</b>	<b>Recidivism Rate</b>	<b>Transports *DYS</b>	<b>**JRC Transports</b>	<b>Total Releases</b>
January	35	27	8	16	45.7%	0	2	35
February	32	25	7	12	37.5%	2	2	33
March	43	27	16	22	51.2%	1	1	38
April	45	27	18	23	51.1%	2	1	44
May	39	25	14	19	48.7%	0	2	41
June	41	32	9	22	53.7%	2	1	35
July	38	26	12	21	55.3%	2	2	41
August	31	22	9	19	63.3%	3	2	28
September	43	30	13	23	53.5%	2	0	43
October	42	30	12	22	52.4%	2	3	35
November	43	33	10	21	48.8%	4	2	44
December	40	26	14	24	60%	3	0	39
<b>TOTALS</b>	<b>472</b>	<b>330</b>	<b>142</b>	<b>244</b>	<b>51.7%</b>	<b>23</b>	<b>18</b>	<b>456</b>

\* Ohio Department of Youth Services

\*\* Juvenile Residential Center of Northwest Ohio

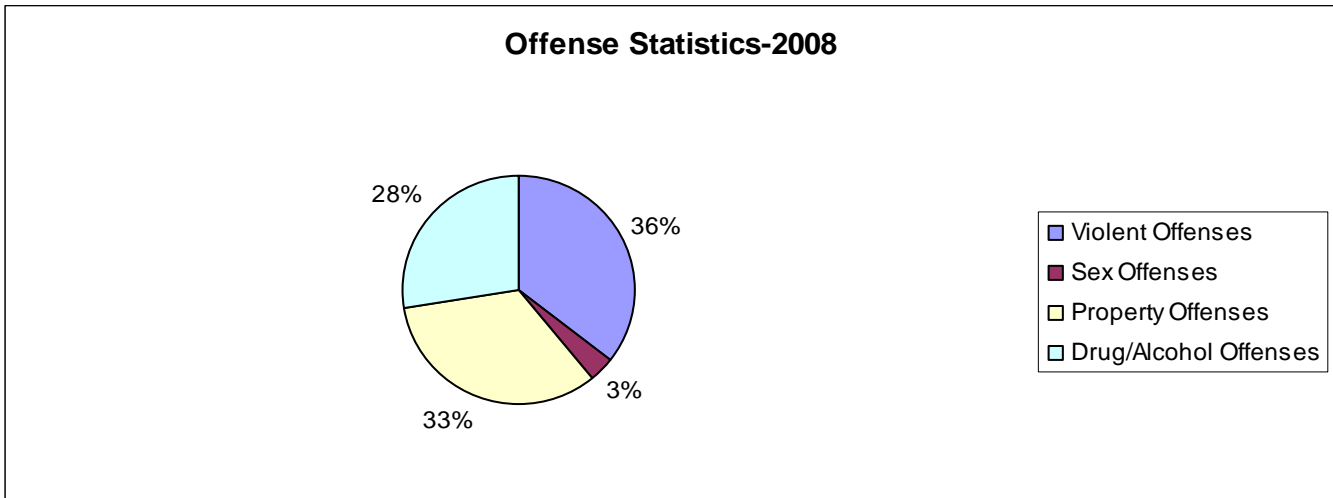
The average daily population for 2008 was 27.86 juvenile detainees: 20.01 males and 7.85 females.



**OFFENSE STATISTICS**

Many youth are admitted for more than one allegation of criminal conduct or for violation of a valid court order. The following list summarizes the most common crimes alleged for which juveniles were incarcerated.

Violent Offenses	93
Sex Offenses	9
Property Offenses	87
Drug/Alcohol Offenses	72



	Offenses of Violence	Sex Offenses	Property Offenses	Drug/Alcohol Offenses
January	9	1	10	4
February	5	1	3	7
March	4	0	6	6
April	13	2	6	7
May	6	0	6	5
June	7	1	13	8
July	9	2	9	11
August	9	0	4	1
September	7	1	7	5
October	10	0	7	7
November	4	0	9	7
December	10	1	7	4
<b>TOTALS</b>	<b>93</b>	<b>9</b>	<b>87</b>	<b>72</b>

**FISCAL YEAR 2008 FINAL OPERATING BUDGET**

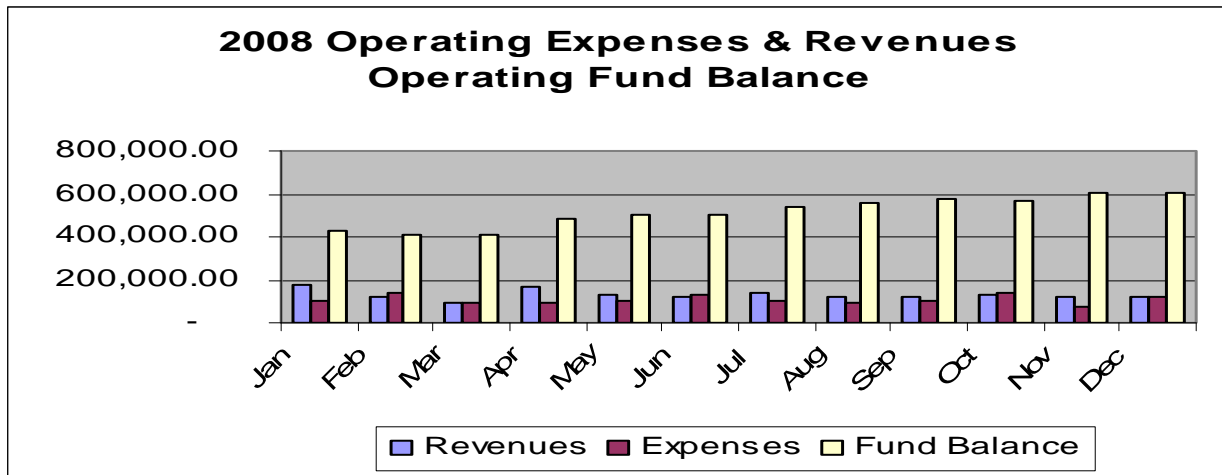
<b>Description</b>	<b>2008 Itemized</b>	<b>Expended 12-31-08</b>	<b>% Expended</b>
Staff Salaries	640,000	631,739.78	98.71
Teachers Salaries	71,800	67,431.59	93.92
Unemployment	9,000	1,228.49	13.65
PERS	90,000	88,067.55	97.85
STRS	11,000	9,440.53	85.85
Medicare-Staff	9,400	8,893.20	94.61
Medicare-Teachers	1,100	939.45	85.40
Workers Comp	27,500	27,434.35	99.76
Office Supplies	8,500	7,037.20	82.79
Detainee Supplies	8,322.55	7,648.31	91.90
Uniforms	4,150	3,412.07	82.22
New Hire Expense	2,000	1,252	62.60
Maintenance Supplies	6,500	5,411.17	83.25
Postage	1,200	1,100	91.67
Equipment	9,999.22	7,173.96	71.75
Computer	6,000	4,500	75.00
Contract Services	120,927.50	120,927.50	100.00
Utilities	1,800	1,079.40	59.97
Telephone	6,500	5,332.03	82.03
Electric	31,000	26,790.15	86.42
Water and Sewer	5,500	5,343.86	97.16
Natural Gas	33,000	25,274.00	76.59
Refuse	1,630.10	1,420.67	87.15%
Repairs	10,057.02	8,854.40	88.04%
Maintenance Contracts	20,500.00	18,098.83	88.29%
Advertising	1,500.00	814.54	54.30%
Travel	5,604.01	4,983.77	88.93%
Training	5,600.00	5,552.29	99.15%
Student Ed Materials	9,500.00	9,386.84	98.81%
Insurance-Employee	213,500.00	158,542.18	74.26%
Insurance - Facility	15,000.00	14,429.00	96.19%
Legal & Professional	12,150.00	4,159.45	34.23%
Title 1 Money	7,200.00	2,520.50	35.01%
Other Expenses	7,082.48	5,558.96	78.49%
<b>Total</b>	<b>\$1,443,322.88</b>	<b>\$ 1,319,050.94</b>	<b>91.39%</b>

\* It should be noted that the final budget reflects all line item transfers as approved by the District Board of Trustees.

## OPERATING REVENUES/EXPENDITURES

The daily rate established for FY 2008 was \$95.70 for member counties and a negotiable rate for non-member counties.

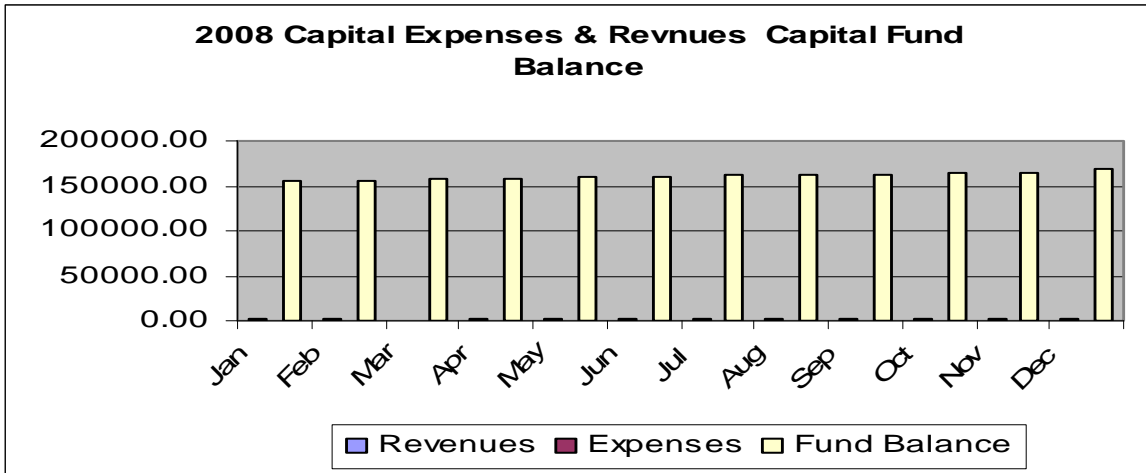
	OPERATING REVENUES	OPERATING EXPENSE	9065 FUND BALANCE	NET GAIN/(LOSS)
JAN	172,625.70	106,592.33	430,421.82	66,033.37
FEB	117,448.41	138,390.80	409,479.43	(20,942.39)
MAR	95,604.27	96,709.49	408,374.21	(1,105.22)
APR	169,603.81	96,554.78	481,423.24	73,049.03
MAY	126,602.58	104,989.18	503,036.64	21,613.40
JUN	124,798.78	128,220.01	499,615.41	(3,421.23)
JUL	139,678.15	103,569.36	535,724.20	36,108.79
AUG	116,405.17	94,700.99	557,428.38	21,704.18
SEP	123,821.95	105,741.28	575,509.05	18,080.67
OCT	130,904.97	141,706.71	564,707.31	(10,801.74)
NOV	119,715.82	77,273.27	607,149.86	42,442.55
DEC	120,503.36	124,602.74	603,050.48	(4,099.38)
TOTAL	1,557,712.97	1,319,050.94	603,050.48	238,662.03



Operating Fund		
Balance	1/1/2008	364,388.45
YTD Revenues	12/31/2008	1,557,712.97
YTD Expenses	12/31/2008	1,319,050.94
Balance	12/31/2008	603,050.48

**CAPITAL REVENUES/EXPENDITURES**

<b>Month</b>	<b>CAPITAL REVENUES</b>	<b>CAPTIAL EXPENSE</b>	<b>9070 FUND BALANCE</b>	<b>NET GAIN/(LOSS)</b>
JAN	1,966.00	0.00	154,665.11	1,966.00
FEB	1,164.00	0.00	155,829.11	1,164.00
MAR	873.00	0.00	156,702.11	873.00
APR	1,456.00	0.00	158,158.11	1,456.00
MAY	1,164.00	0.00	159,322.11	1,164.00
JUN	1,164.00	0.00	160,486.11	1,164.00
JUL	1,164.00	0.00	161,650.11	1,164.00
AUG	1,164.00	824.00	161,990.11	340.00
SEP	1,165.00	0.00	163,155.11	1,165.00
OCT	1,164.00	0.00	164,319.11	1,164.00
NOV	1,164.00	0.00	165,483.11	1,164.00
DEC	2,788.36	0.00	168,271.47	2,788.36
<b>TOTAL</b>	<b>16,396.36</b>	<b>824.00</b>	<b>168,271.47</b>	<b>15,572.36</b>



\* There were no expenditures from the Capital Fund Balance in 2007. Revenues earned were not significant enough to display on the graph.

Capital Fund		
Balance	1/1/2008	152,699.11
YTD Revenues	12/31/2008	16,396.36
YTD Expenses	12/31/2008	824.00
Balance	12/31/2008	168,271.47